

SIM

ANNUAL REPORT 2023







Contents

President's Letter 5

Because Jesus Said Go 6

Sent to Respond to Need, Proclaim
the Gospel, and Equip the Church 8

Breaking Down Barriers to Sending 10

Financials 12

Fueling the Future of Mission 14





President's Letter

"Are we making any progress?"

As we closed the books on FY23, that was my big question.

It has been three years since we began our intentional effort to revitalize the ways SIM USA seeks and serves the American believers God is moving toward cross-cultural ministry.

When I took on the role as president in 2019, our declining rate of incoming new workers became my number one concern . . . then COVID blindsided us all! Still, we stayed focused on what we believed God was calling us to do, and despite the upheaval and uncertainty of these last few years, the answer to my question is a definite, "Yes!"

As I took time to pause, reflect, and take stock of all God has done, I was humbled and inspired by all you have helped accomplish.

As you'll find in the following pages, SIM workers continue to see lives transformed by the gospel around the world, and God is busy transforming nearly *twice as many lives here at home!*

When I compare how many potential workers we welcomed to our campus for the first step

of the process in FY19 or FY20, to how many we welcomed for Connect in 2023, I find where we stand today wildly encouraging. In 2023, God turned 86 lives upside-down as these potential missionaries gathered at Connect to submit their futures into His hands.

The Lord also brought 47 pastors to our campus. Some of these are now becoming missionaries! The others returned to their congregations more ready than ever to identify, encourage, and equip the future workers among them.

That's 133 new stories that I wish I could tell you, but as you can see, I'm already short on space.

So let me close by saying thank you. The truth is that your giving, sacrificial financial support, and prayers are a huge part of these stories.

Ever grateful for you,

Randy Fairman | President, SIM USA

BECAUSE JESUS SAID GO

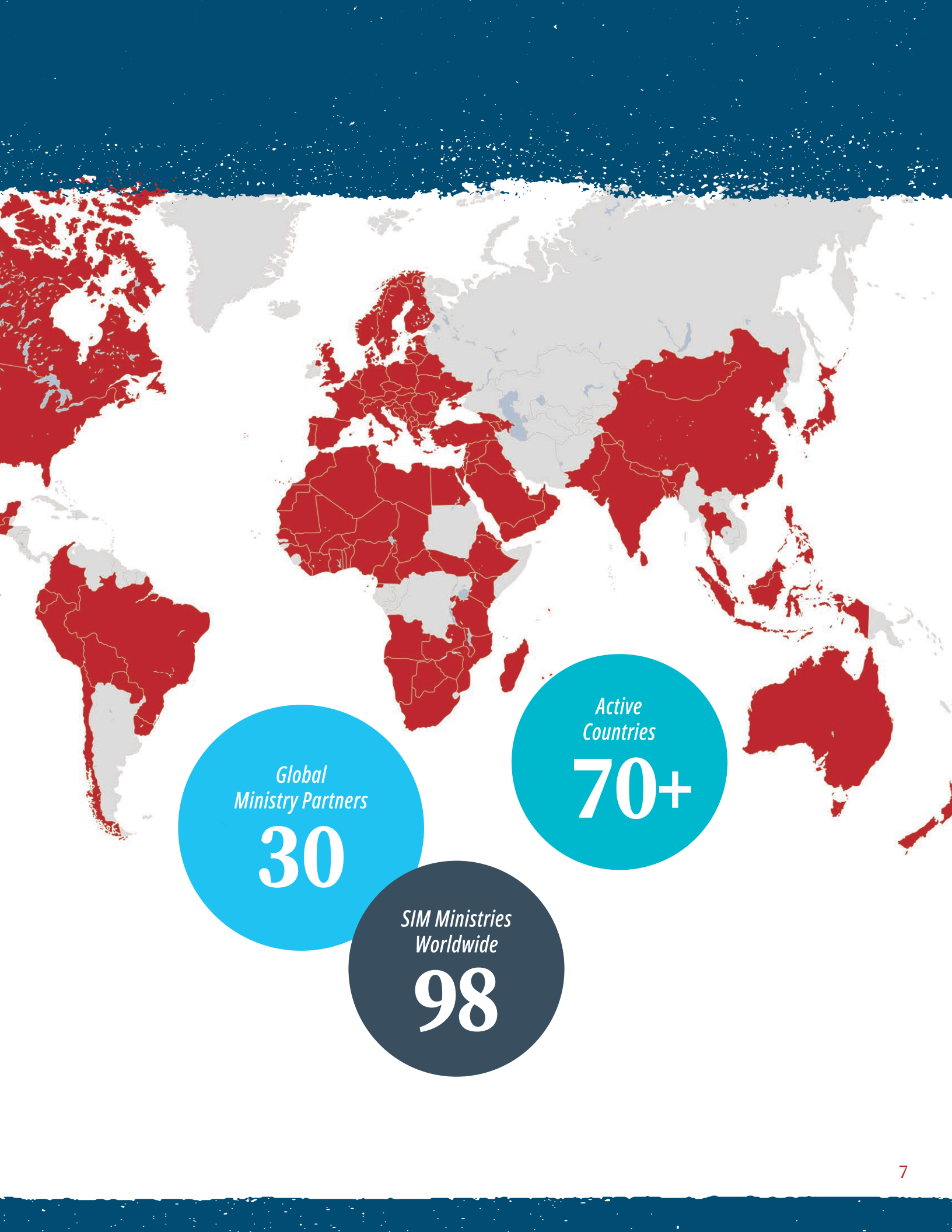
SIM was founded by three young men in 1893.

Walter, Thomas, and Rowland were convinced that the kingdom of God is for all people—but when they looked at the state of global Christianity, they saw a great need. The gospel might be for all—but *not all had access to the gospel.*

Burdened for the nearly 60 million unreached people then living in sub-Saharan Africa, our founders gave their all to carry the compassionate heart of Christ across vast oceans and plant His Church where none existed.

Through their obedience, God established indigenous African churches that would grow over many decades to become a powerful, lasting witness on the continent and a new sending partner in global mission.





*Global
Ministry Partners*

30

*Active
Countries*

70+

*SIM Ministries
Worldwide*

98

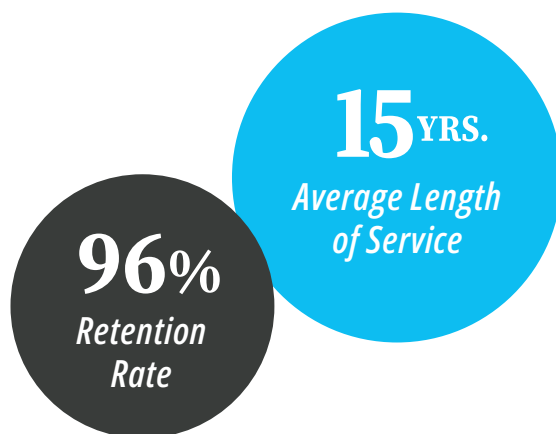
SENT TO RESPOND TO NEED, PROCLA

With nearly 130 years of experience reaching the least reached and a global network of partner offices, SIM USA is uniquely equipped to help American churches mobilize Christians from their congregations to serve the Lord overseas.

These American workers give up their lives and careers here in the United States to let the Lord use their skills to build His kingdom worldwide. They live, work, worship, and grow as they disciple friends and neighbors in the communities where God plants them.

But they don't do it alone!

They join multicultural teams of believers under the guidance of local SIM leadership and—once established—the local Church. Together in gospel community, they compassionately respond to human need in Jesus's name, proclaim God's good news, and equip local churches to grow, thrive, and multiply.



261 *Workers in Responding Focus Ministries*

Respond to Need

Workers serving ministries with this focus use their skills to respond to diverse and pressing needs. They provide help and healing to the poor and suffering while working in their communities to establish God's kingdom and point the people they encounter toward the ultimate healer of all mankind's brokenness.

IM THE GOSPEL, AND EQUIP THE CHURCH

Proclaim the Gospel

Workers with skills in this area serve through local ministries and churches in their communities, partnering with them as they share the good news. With a strong focus on reaching the least reached, about one-third of SIM USA workers are on the front lines of mission—working alongside international believers to break new ground and see churches established among communities with no Christian witness.



178 *Workers in Proclaiming Focus Ministries*

Equip the Church

Workers with skills in this area use their knowledge, education, and experience to serve and build up local churches and leaders in their communities. They invest training, resources, and much more in places where seminaries are unheard of and even books are scarce. All to help cultivate mature pastors and congregations who understand their role in God's global mission.



211 *Workers in Equipping Focus Ministries*

BREAKING DOWN BARRIERS TO SENDING

With the help of early funders, SIM USA conducted in-depth research to understand opportunities to better reach and serve potential workers and U.S. churches and leaders.

Here's what we learned:

The U.S. church wants more support in identifying and nurturing future workers among their congregations.

The web offers SIM USA significant opportunities to connect directly with potential workers seeking guidance.

SIM USA's expertise has equipped us well to answer potential workers' top questions that include:

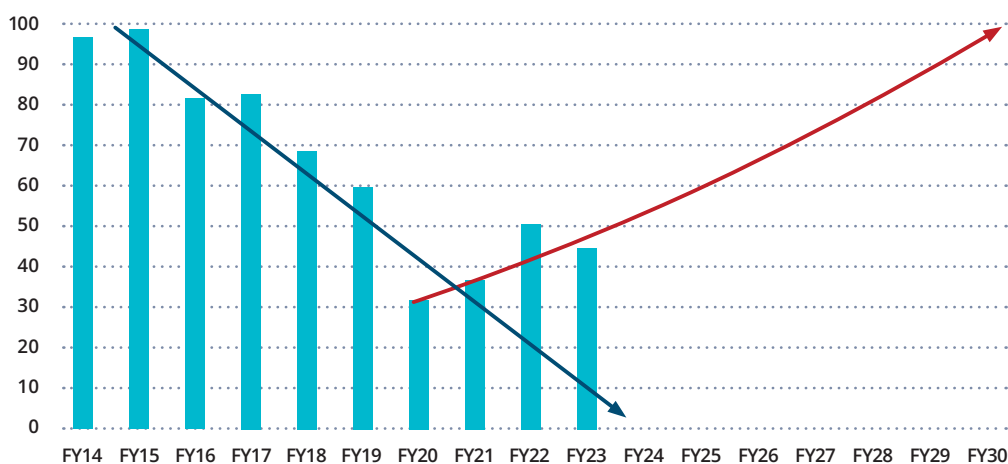
- What does it mean to be called?
- Who is qualified to go?
- What is missionary life like today?

Potential workers at the point of decision benefit greatly from the opportunity to consider God's leading in community.

As a result of research and new endeavors enabled by sacrificial investments, we have begun to see an increase in engagement among potential workers.



New missionaries in pipeline at the start of fiscal year





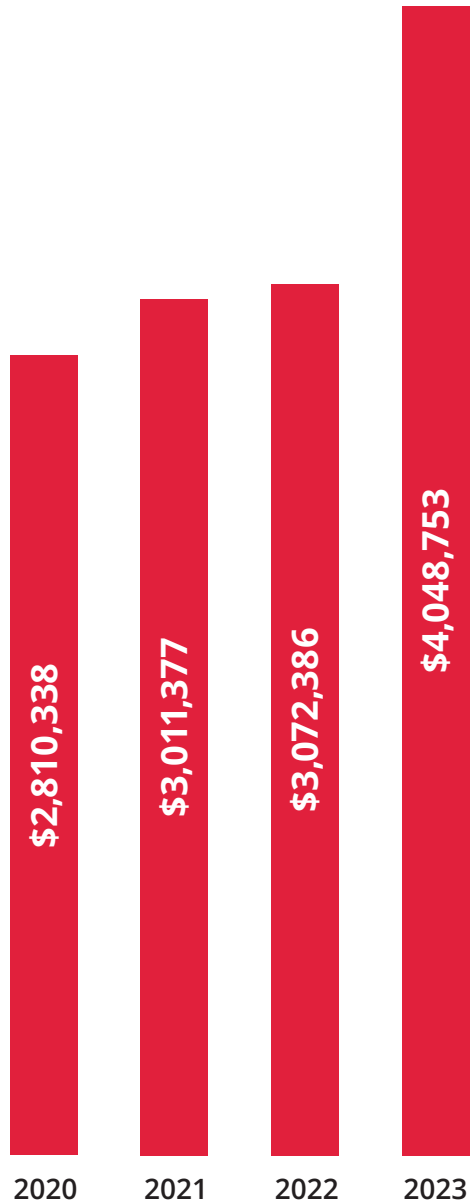
2023 FINANCIALS

STATEMENT OF INCOME AND EXPENSE

For Fiscal Years Ending on September 30

INCOME	2021	2022	2023
Contributions	50,522,528	50,203,283	49,854,767
Rental, Sales, Other	993,183	875,260	232,687
Investment Income	4,781,142	(6,184,654)	2,907,788
Total Income	56,296,853	44,893,889	52,995,242
EXPENSE			
Program Services	44,289,690	46,877,595	46,608,719
Management and general	5,995,784	5,748,354	4,662,628
Fundraising	1,756,966	2,043,405	1,492,280
Total Expenses	52,042,440	54,669,354	52,763,627
Change in Net Assets	4,254,413	(9,775,465)	231,615

GENERAL FUND DONATIONS



Thank You!

Your gifts in 2023 to SIM USA helped us partner with the American Church to send nearly 50 new workers to join multicultural teams to reach the least reached.

Your gifts make a difference by helping us to recruit, prepare and journey with Christians sent by churches:



SIM has operated “By Prayer” since our founding. Without your vital prayer support, it would be impossible to know where He is leading or how to get there!



Your gifts have helped us to engage more potential workers in the community through our on-campus Connect events. In 2023, we hosted 133 guests at five events.



Your gifts helped us to host and train 68 future workers at our two essential week-long training events.



And you equipped us to provide best-in-class emotional and spiritual care for our long-term workers who may be experiencing crises.

FUELING THE FUTURE OF MISSION

SIM USA believes that Jesus has called all Christians to find their role in the Great Commission—a role that may change many times over the course of a life spent with Him.

It is our heart to journey with Jesus followers here in the United States, providing ways for everyone to engage in what God is doing overseas.



PRAY

Join Pray938 and receive a daily text message featuring a real individual who is on the journey toward global mission. Commit to praying just one minute each day for these future workers.



GIVE

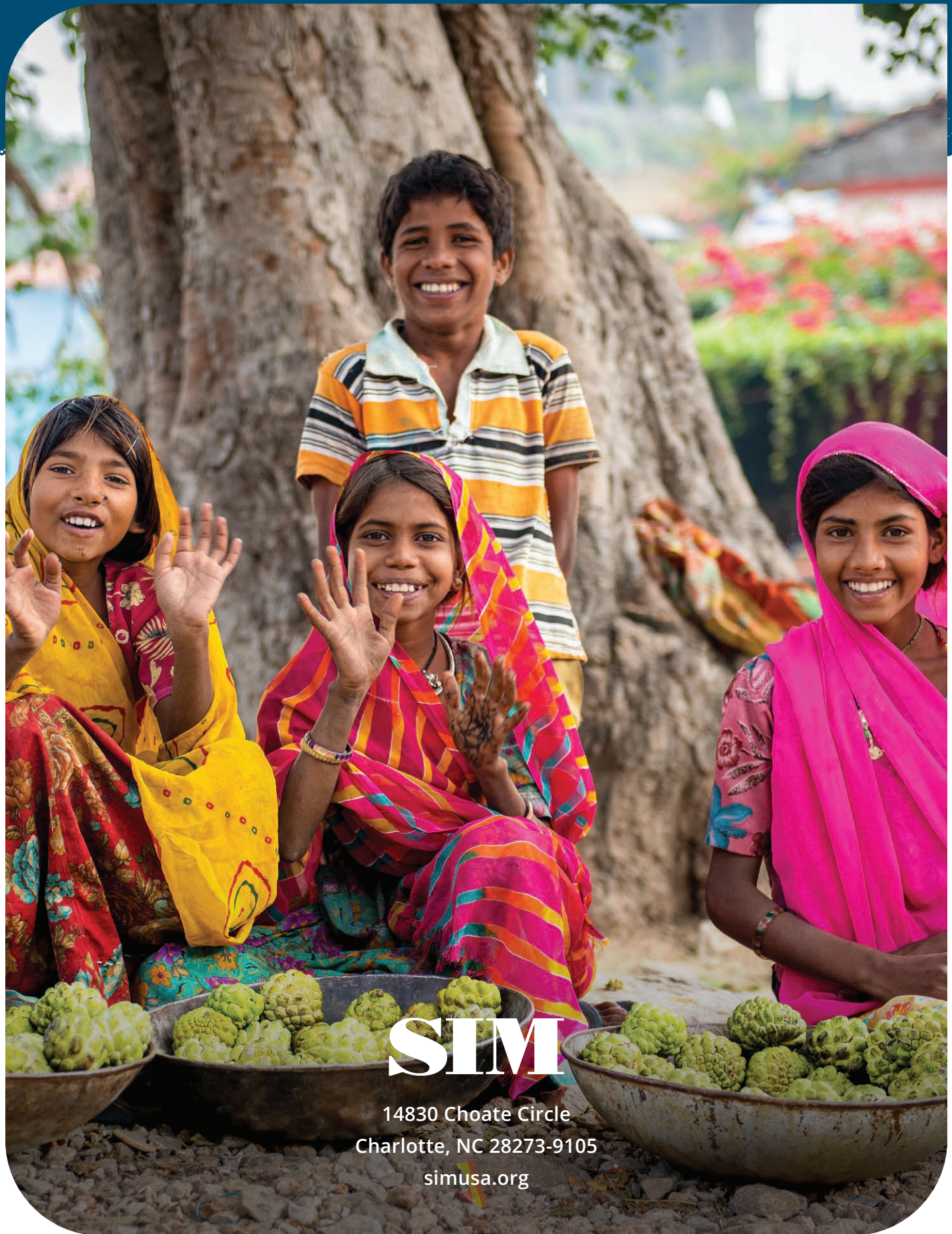
More than ever, SIM USA needs financial partners who will help us find and recruit future workers. Those already abroad remain in service supported by their personal teams of senders. Still, it will take more staff, more church outreach, and more digital engagement to mobilize tomorrow's workers in our modern world.



GO

Explore how God can use you and what you have to offer for His glory in global mission. There are more than 2,000 opportunities to use diverse skills in diverse communities across the globe. Inquire about joining SIM USA for a Connect experience and get into community with others who are also on the journey of discernment.





SIM

14830 Choate Circle
Charlotte, NC 28273-9105
simusa.org