



**SIM**

ANNUAL REPORT 2022





# CONTENTS

President's Letter 5

Because Jesus Said Go 6

To the Ends of the Earth 8

Sent to Respond to Need, Proclaim the Gospel, and Equip the Church 10

Lives Are Transformed Because God's People Pray, Give, and Go 12

Sending for the Next Century 14

Financials 16

Fueling the Future of Mission 18





## PRESIDENT'S LETTER



Matthew 28:16-17:

*Now the eleven disciples went to Galilee, to the mountain to which Jesus had directed them. And when they saw him they worshiped him, but some doubted.*

It was well over 70 miles for those disciples to walk from Jerusalem to Galilee. Why did they walk all that distance if they were going to doubt when Jesus showed up? It seems to me they loved Jesus so much that they obeyed Him even while they doubted.

It still happens today just like it did back in Galilee. We are finding a lot of people in the USA who are willing to take steps toward the Great Commission even while they doubt.

This year we started Connect, a new event at SIM USA that helps us partner with churches in finding doubting disciples who are willing to obey Jesus in the next step. We bring together dozens of disciples of Jesus Christ in the USA who are asking the question, "Is God leading me to give up my job and step into long-term missions?" Connect enables people to learn, pray, confront their doubts, and better discern whether they are called to go and make disciples of all nations.

We held four Connect events with more than 100 people responding to God in obedience, even though they had doubts. Some of them are continuing on to serve as long-term SIM missionaries and some are continuing on to serve with other agencies. We are so very excited to see the ways God is using our SIM family to fulfill the prayers of many that God would send more workers into His harvest field.

Please take the time to really enjoy our year-end report and reflect on the great work God is using obedient servants to accomplish. It is such a great privilege to serve as the president of SIM USA and to lead this faithful tribe of servants.

In Jesus' name,

Randy Fairman  
President, SIM USA



# BECAUSE JESUS SAID GO.

**SIM WAS FOUNDED** by three young North American men in 1893.

Walter, Roland, and Thomas were convinced that the kingdom of God is for all people—but when they looked at the state of global Christianity, they saw great need. The gospel might be for all—but *not all had access to the gospel*.

Burdened for the nearly 60 million unreached people then living in sub-Saharan Africa, our founders gave their all to carry the compassionate heart of Christ across vast oceans and plant His Church where none existed.

Through their obedience, God established indigenous African churches that would grow over many decades to become a powerful lasting witness on the continent and a new sending partner in global mission.



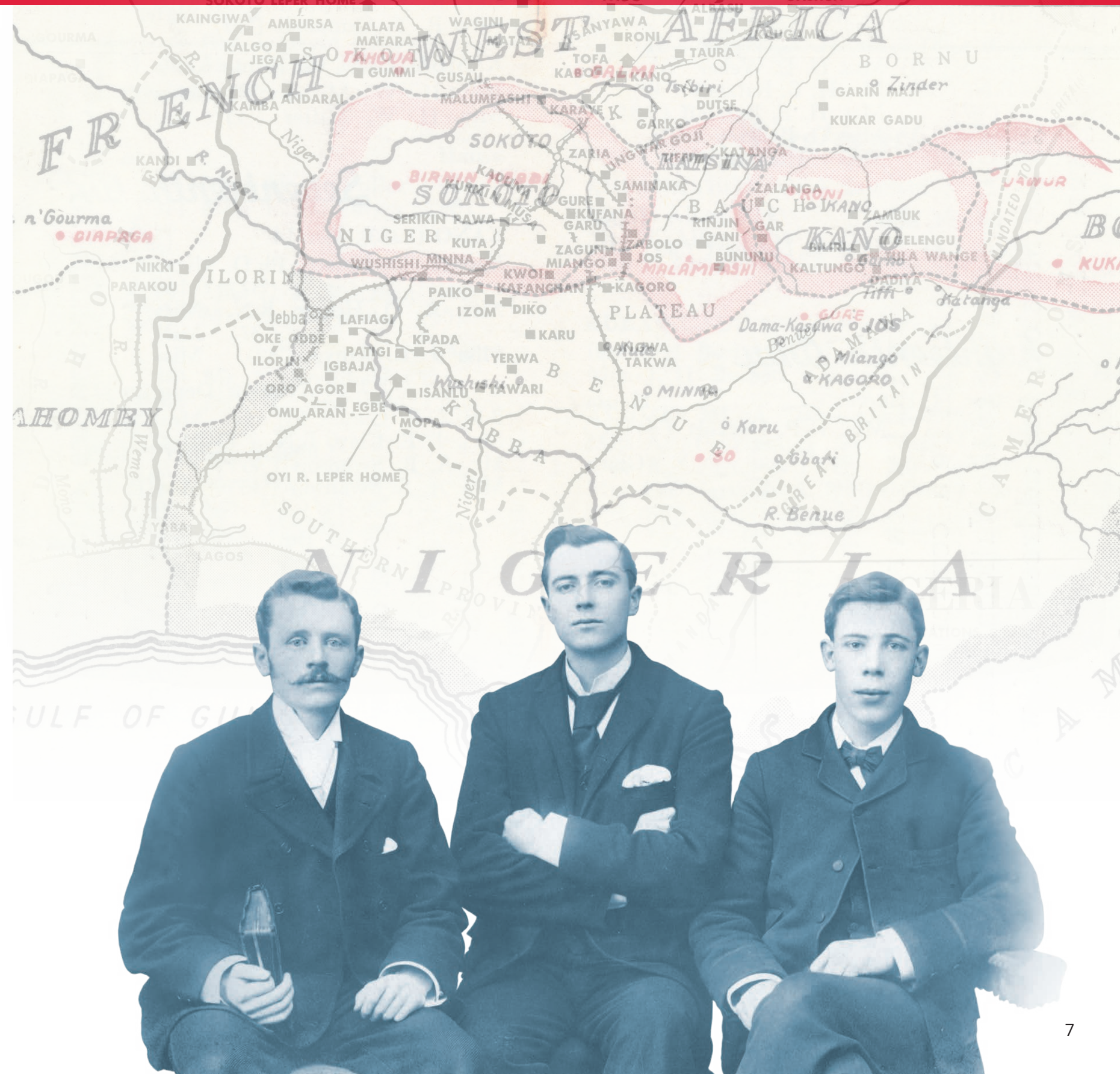
Dr. Andrew Stirrett was SIM's first medic. He gave up considerable personal wealth to become one of the four who established the first SIM base in Nigeria in 1902.



In 1929, despite Depression difficulties and opposition of British Colonial policy, SIM missionaries met in Miango, Nigeria and confirmed their decision to expand to reach Nigeria's Hausa people.



The baptism of a young deaf man in Miango, Nigeria in 1930.





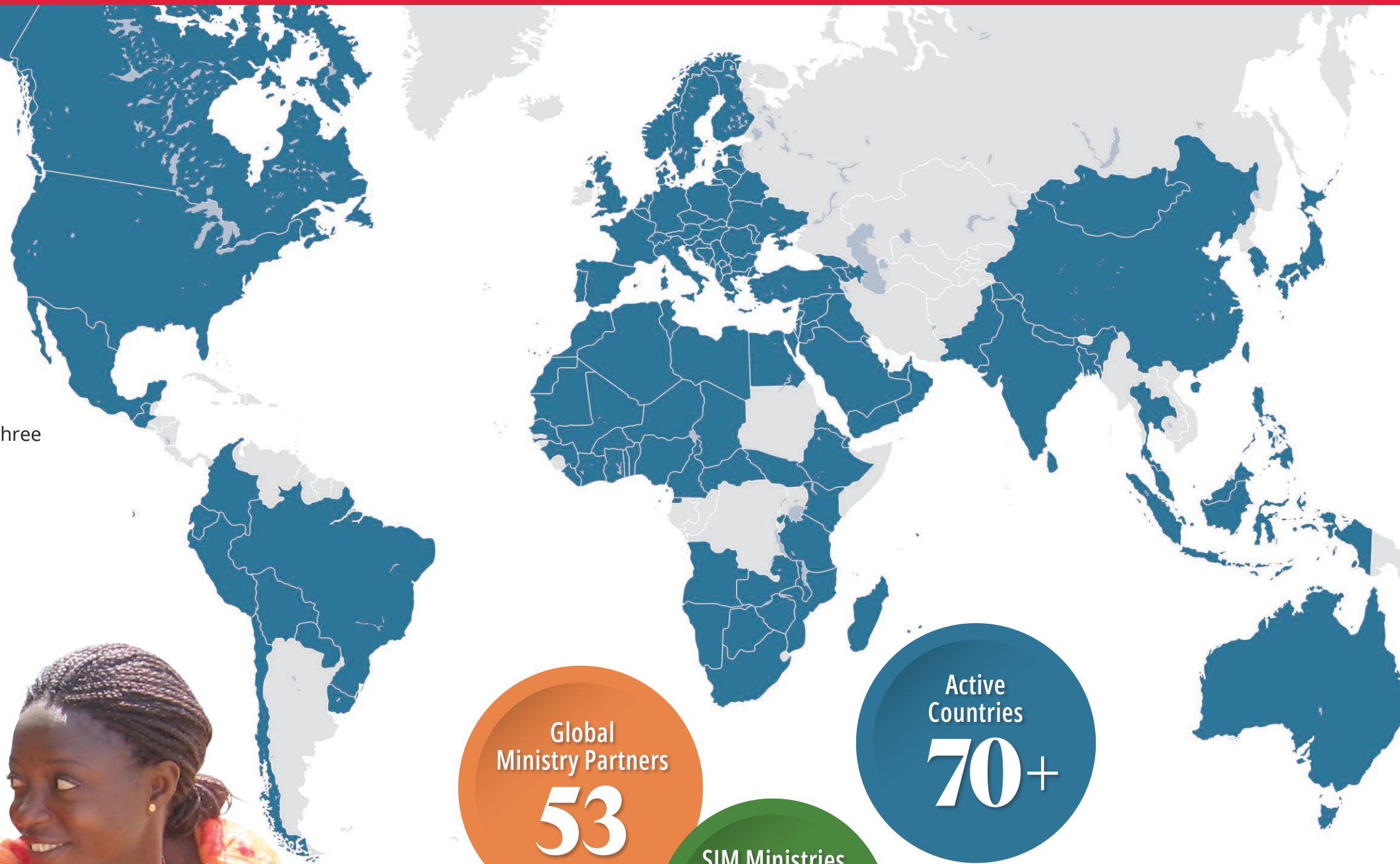
# TO THE ENDS OF THE EARTH.

## THE FACE OF GLOBAL CHRISTIANITY

has changed since 1893, and SIM USA is just one part of what has become an international sending organization.

Diverse churches around the world are sending believers from their congregations to partner across cultural and racial boundaries—showing the world what life in God’s kingdom looks like and inviting others to taste and see what Jesus offers.

SIM USA workers represent just 41% of the SIM workforce, worldwide, but many more are needed. There are roughly three billion people alive today who still lack access to the gospel.



Global  
Ministry Partners

53

Active  
Countries

70+

SIM Ministries  
Worldwide

98



# SENT TO RESPOND TO NEED, PROCLAIM THE GOSPEL, AND EQUIP THE CHURCH.

**WITH NEARLY 130 YEARS** of experience reaching the least reached, and a global network of partner offices, SIM USA is uniquely equipped to help American churches mobilize Christians from their congregations to serve the Lord overseas.

These American workers give up their lives and careers here in the United States in order to let the Lord put their skills to use building His kingdom around the world. They live, work, worship, and grow as they disciple friends and neighbors in the communities where God plants them.

But they don't do it alone!

They join multicultural teams of believers under the guidance of local SIM leadership and—once established—the local Church. Together in gospel community, they compassionately respond to human need in Jesus's name, proclaim God's good news, and equip local churches to grow, thrive and multiply.



**223**

Workers in  
Responding Focus  
Ministries

## RESPOND TO NEED

Workers serving ministries with this focus use their skills to respond to diverse and pressing needs. They provide help and healing to the poor and suffering, all the while working in their communities to establish God's kingdom and point the people they encounter toward the ultimate healer of all mankind's brokenness.

## PROCLAIM THE GOSPEL

Workers with skills in this area serve through local ministries and churches in their communities—partnering with them as they share the good news of the gospel. With a strong focus on reaching the least reached, about one-third of SIM USA workers are on the frontlines of mission—working alongside international believers to break new ground and see churches established among communities that have no Christian witness.



**176**

Workers in  
Proclaiming Focus  
Ministries

## EQUIP THE CHURCH

Workers with skills in this area use their knowledge, education, and experience to serve and build up local churches and leaders in their communities. They invest training, resources, and much more in places where seminaries are unheard of and even books are scarce. All in order to help cultivate mature pastors and congregations that understand their role in God's global mission.



**268**

Workers in  
Equipping Focus  
Ministries



# LIVES ARE TRANSFORMED BECAUSE GOD'S PEOPLE PRAY, GIVE, AND GO.



**DISCIPLESHIP HAPPENS** in relationship, so the incredible ministry impact affected through SIM ministries only happens because everyday believers obey God's call to send and to go.

SIM USA is partnering with U.S. churches to recruit, prepare, and journey with American believers as they move toward international ministry—walking alongside them from the first inkling in their hearts, to ministry placement, and staying to support and care for them as they serve, on average a decade or more, overseas.



# SENDING FOR THE NEXT CENTURY.

**OVER THE LAST CENTURY,** the landscape of Christianity has changed. Across the globe, God has nurtured flourishing movements of the gospel and grown His Church where previously, no witness could be found.

**But still, more than three billion people lack access to the gospel or a gospel community.**

Teams of workers around the world are crying out for help, asking for SIM USA to send more American workers to join God's harvest. So, we are working to revolutionize the way we serve the American Church and mobilize individuals in order to double the number of workers sent from the U.S.—from roughly 50 to 100 new workers each year.

Dedicated to remaining highly relational, we have created a new recruitment event called Connect. This event allows for much earlier in-person, community experiences for those discerning their role in global mission.

As a result, God has radically increased the number of applicants choosing to journey with SIM USA.

**47**  
New  
Applicants

**40**  
Long Term  
Workers Sent

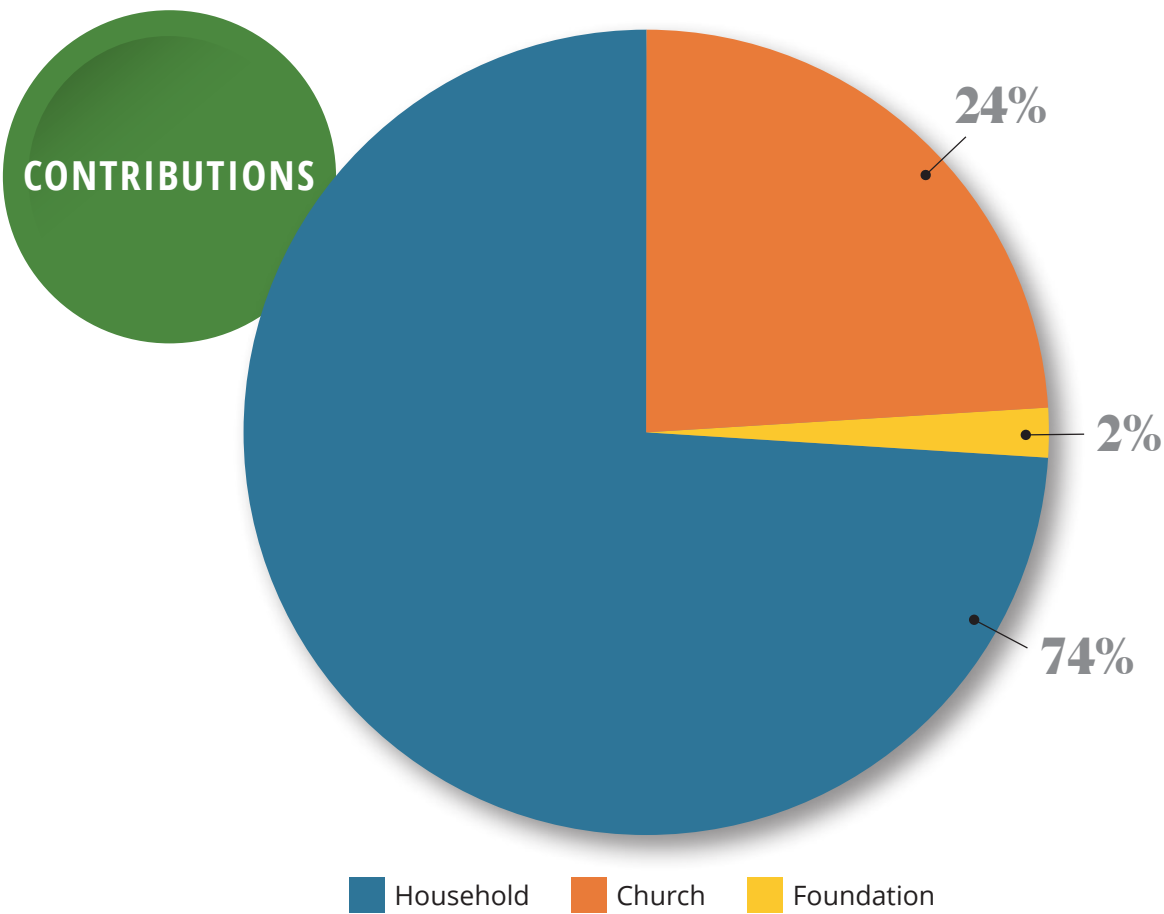
**54**  
Short Term  
Workers Sent



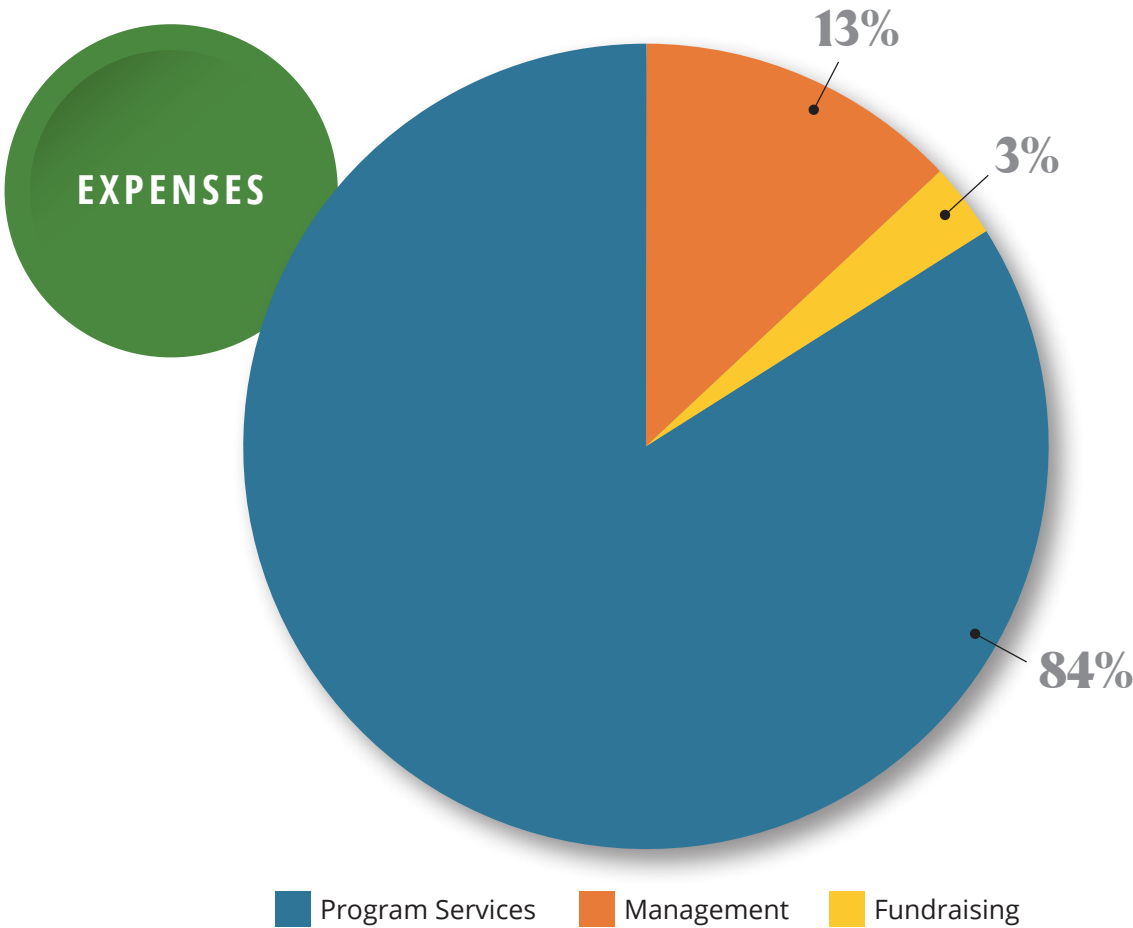


# 2022 FINANCIALS

Preliminary numbers. Final numbers to be reported in audited financial statements.

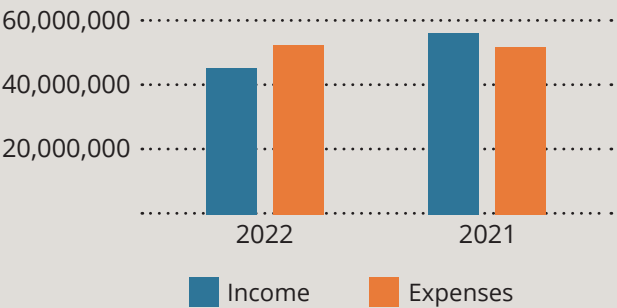


**TOTAL CONTRIBUTIONS: \$50,514,648**



**TOTAL EXPENSES: \$54,709,710**

## INCOME AND EXPENSES



## SEND MORE WORKERS CAMPAIGN

**TOTAL CONTRIBUTIONS:** \$1,783,520  
**Expenses: Wages & Benefits:** \$1,630,898  
**Events:** \$346,764  
**Technology:** \$319,247  
**Other:** \$17,941  
**TOTAL EXPENSES:** \$2,314,850



# FUELING THE FUTURE OF MISSION.

**SIM USA BELIEVES** that all Christians have been called by Jesus to find their role in the Great Commission—a role that may change many times over the course of a life spent with Him.

It is our heart to journey with Jesus followers here in the United States, providing ways for everyone to engage in what God is doing overseas.



**PRAY**

Join Pray938 and receive a daily text message featuring a real individual who is on the journey toward global mission. Commit to praying just one minute each day for these future workers.



**GIVE**

More than ever, SIM USA needs financial partners who will help us find and recruit future workers. Those already abroad remain in service supported by their personal teams of senders, but it will take more staff, more church outreach, and more digital engagement to mobilize tomorrow’s workers in our modern world.



**GO**

Explore how God can use you and what you have to offer for His glory in global mission. There are more than 2,000 opportunities to use diverse skills in diverse communities across the globe. Inquire about joining SIM USA for a Connect experience and get into community with others who are also on the journey of discernment.







**SIM**

14830 Choate Circle  
Charlotte, NC 28273-9105  
[simusa.org](http://simusa.org)