

# Music to their ears

## Praise God for using Mary—and you!—to reach suffering women

In one Middle Eastern country,\* women are trafficked into servitude for wealthy and middle-class families. They are promised all kinds of wonderful things—a job with pay, hope for a bright future, and a great life. Brokers fly them in from the Philippines, Malaysia, Indonesia, India, Pakistan, Bangladesh, and Sri Lanka.

But in the end? They wind up as house servants. Most are never allowed to leave, and in many cases, they go without pay and are treated poorly. One such woman found her child chained to a chair because her employer didn't approve of the child's behavior.

Mary,\* a SIM worker in this country, learned what was happening and became deeply burdened for these women. She longed to help somehow, and to share with them the good news of Jesus.

The Lord placed upon her heart an idea . . .

The trafficked house servants most commonly worked in apartment homes numbering 20 to 30 per building. This major city has hundreds of these buildings, each managed by someone similar to what is known in the United States as a landlord.

Mary began establishing friendships with the building managers. She also developed MP3 players containing Scripture and Christian songs in the various languages in which the

women are fluent. God granted her favor through the managers; they gave her permission to enter and hand out these audio devices—which they knew contained overtly Christian content—to the house servants. Tied as they were to the home and their Muslim employers, hundreds of house servants heard the gospel for the first time in their own language. Several became believers.

*Hundreds heard the gospel for the first time in their own language.*

In addition to distributing the audio devices, Mary established a nonprofit, legal advocacy organization. A number of women have since been released, and today her organization is working to protect these women from mistreatment and to ensure they receive the back pay owed to them.

Please pray for protection and release for those who've been trafficked, and for God to continue moving in this hard place.

\* Actual places and names undisclosed for security purposes.



*"The harvest is plentiful, but the workers are few. Ask the Lord of the harvest, therefore, to send out workers into his harvest field."*

LUKE 10:2 (NIV)

*"When Jesus says, 'I have brought in my harvest,' the end will come, and we will see Him face to face. Until then, we continue to go."*

SIM USA PRESIDENT BRUCE JOHNSON

# SIM



# SIM



2018

## PRESIDENT'S MINISTRY REPORT

*SIM is your partner in mission. Celebrate how God is using you to share His good news in hard places around the world!*





**BRUCE JOHNSON**  
President, SIM USA

Our board of directors meets three times each year to provide oversight, wisdom, and direction for SIM USA. At these briefings, I share about any hotspots around the world affecting our missionaries and our work. Three years ago, I'd perhaps have one hotspot to report per year. In 2018, I shared about four hotspots.

Simply put, our world's chaos is escalating. Matthew 24 tells us of the increasing troubles we will experience in the last days, and thus we are not dismayed.

However, as a missionary-sending organization dedicated to proclaiming the good news in hard places, we are acutely aware of the potential dangers facing Christians actively sharing their faith. In 2018, we had to make difficult decisions to protect some of our workers, including the extreme of relocating them for a time or permanently reassigning them.

Missions is not for the fainthearted.

Even, and sometimes especially, in dark places and when facing deep challenges, we see God's work thriving. Jesus' love and truth are urgently needed. God is calling us to make disciples among every tribe, tongue, people, and nation. He appoints us to do the work, and so we continue to go. To move forward well, we must pause to celebrate what God has done. In reflecting on 2018...

You helped increase our funding more than six percent, which helped spark more encouraging breakthroughs in spiritually hard places, including:

- A church being established in a remote place that previously had no Christian presence.
- Doors opened in North Africa to take the gospel where it has not been for more than 1500 years.

In some areas of the U.S. we're seeing an emerging reconversion to the Great Commission and to missions in general. While of course we long for more, we're witnessing a real welling up in Hispanic and African-American churches.

Meanwhile, individual hearts burn to serve in missions, as our recruiting team daily discovers. The vast number of opportunities SIM provides in more than 70 countries is distinctly attractive. I've yet to meet a person where their background, experience, and calling could not fit with SIM. From veterinary work to bookkeeping, from serving in healthcare to serving hot meals as a chef, SIM workers are responding as Jesus' ambassadors, proclaiming His good news, and equipping the local Church in the far corners of the earth.

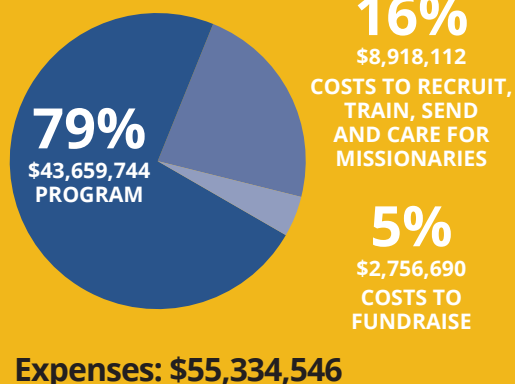
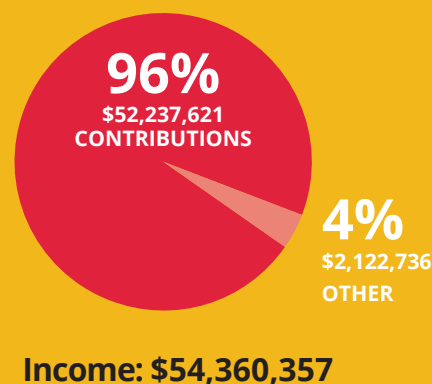
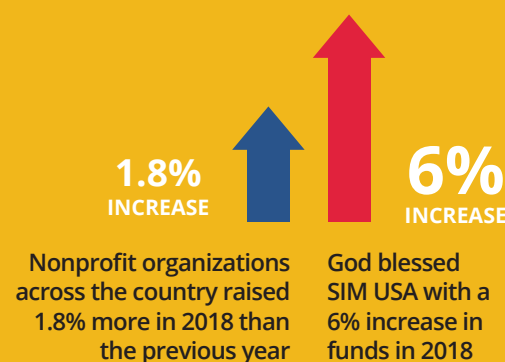
Thank you for allowing God to use you to accomplish great things for His glory.

Your partner in mission,

*Bruce*



## 2018 FINANCIALS



## RECRUIT

*"Only about 1 out of 100 'missionary decisions' results in actual career mission service. Why? First, because few parents,*

*pastors, and friends really encourage anyone to follow through on that kind of a decision."*

— **Dr. Ralph Winter**

Because of the above statistic, SIM seeks to not only recruit workers (at colleges, in churches, in response to online inquiries, and in many other ways), but to encourage each recruit every step of the way, into, and beyond a commitment to serve. We invest heavily in each one through prayer and personalized care as they consider the many possibilities available to them.

**608** total inquirers, leading to **118** applications



## TRAIN

*"Mission preparation has been a hallmark at SIM. For decades it has been intensive and thorough. Our new workers experience*

*three one-week training and preparation sessions, online training, specialized training through ministry partners, and more. We help our workers prepare for various realities they may encounter while serving, always emphasizing dependence on God."*

— **SIM USA President Bruce Johnson**

*"We specifically wanted to go where the gospel wasn't, and SIM seeks out those places. We'd never been taught anything like what we learned in security training. And the things we learned from the devotion tools sessions we'll be taking with us to the field to maintain spiritual vitality."*

— **David and Jordan Fleming, SIM church planters in Tanzania**

**3** intensive training courses totaling **149** in attendance



## SEND

God has led SIM to remain intentionally interdenominational, international, and multiethnic. We believe

this expresses unity in the body of Christ and makes us more effective in ministry.

*"SIM sends workers all around the world [to 70+ countries], and we celebrate this. But we're still looking for more people. One of our hospitals in the Middle East is overtly Christian, primarily serving the majority people of influence in the area, and has a very good reputation with these people. But we've had to hire local workers. While this is not a bad thing, maybe only a quarter of the 500 employees now are committed followers of Jesus. Do you know someone interested in sharing Jesus among Muslims? Whom can we send?"*

— **SIM Regional Director for Middle East, North Africa, Central and South Asia**

**56** new missionaries sent  
**47** as short-term workers



## CARE

We believe the increase in funds raised in 2018 (see financials below the president's letter) reflects the practical

care our donors extend to our workers. And while personal, spiritual, and emotional care is unquantifiable, our workers abroad continually express humble gratitude for the care and prayer they consistently receive.

No one ever serves alone; SIM workers are family, welcomed into a supportive team with regional leadership no matter where they choose to serve. SIM's dedication to caring for its people as we bring good news to hard places is one of our distinctives.

*"One reason I continue to be a SIM missionary is that our motto, 'By Prayer,' really is lived out. Praying with [our patients] is very important to me and very meaningful."*

— **Dana Iglesias, a six-year SIM worker serving at ECWA Hospital Egbe in West Africa**

Every SIM worker must raise **200** prayer partners, an essential aspect of care.

## Reaching the unreached



**Remote regions are challenging. But God loves a good breakthrough.**

SIM works in partnership with a denomination in Liberia to take the gospel into its remote regions. These places take days to get to. But medical and healthcare teams endured the journey, going to minister among villages that were not at all Christian. The chief and his leaders invited SIM back. Villagers came to faith, and now a church is being established there under the leadership of

a pastor who was among the group sent to care for the people and share the good news. Praise God for His great love for all people, triumphant even in what we see as obstacles!

**PRAY** for the far-reaching, deeply impacting ministries of SIM in hard places around the world.